

THEME | SCENE



HD65

HD
ready

You love big pictures but know it is all in the detail. The High Definition detail you've never seen before in your favourite film. Detail that captivates and enthrals - every tiny detail larger than life with electrifying, perfectly balanced colour and crystal clarity. See the movie as it was intended to be seen. On the big screen. In HD. At home.

The ThemeScene® HD65 home cinema projector delivers the kind of picture quality associated with the best digital cinema performance around the world. With a digital HDMI signal you can create a true digital projection system that produces a spectacular High Definition cinematic experience in your own home. A masterly collaboration of HD Ready 720P DLP® technology from Texas Instruments and Optoma Colour Enhancement Technology produces a stunningly bright image with perfectly balanced vivid colour and crystal clarity.



A new kind of TV

The Optoma Colour Enhancement Technology™ used in the HD65 produces an exceptionally bright 1600 Lumens image enabling quality viewing in high ambient light conditions – use this projector like a TV. Leave the lights on for casual viewing only dimming them for feature presentations.

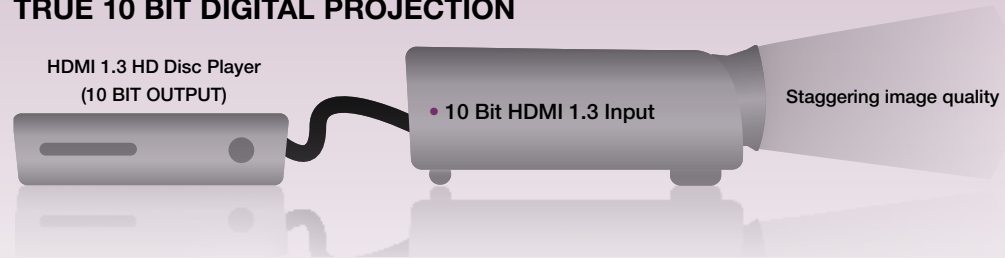
Even the largest big screen TV's will seem small by comparison; the HD65 can produce a huge image the size of your wall. Immerse yourself in HD movies from the latest HD disc players, blast life size HD characters for an extreme gaming experience or project all the atmosphere of a live sporting event into your home.



A portable 120" TV

Take it to a friend's house for an important gaming confrontation, the big match or the latest block-buster movie. Smaller and lighter than an Xbox or PS3 and only a little larger than a Nintendo Wii the HD65 is the smallest High Definition Home Cinema projector available.

TRUE 10 BIT DIGITAL PROJECTION



Currently filmmakers record and process movies at greater colour depths than most consumer Home Cinema equipment can reproduce. Movie studios have had to reduce the colour depth of their films for home distribution so they are compatible with Home Cinema equipment. The pure 10 bit digital signal path of the HD65 paves the way for movie and gaming content to be displayed in a virtually lossless form producing a level of visual acuity and realism never seen before in the home

Deep Color™ HDMI 1.3

The latest 10 bit HDMI technology adds high definition colour to high definition images producing stunningly natural, vibrant colour.

- HDMI 1.3 supports 30-bit, (10 bits per channel RGB or YCbCr) colour depths, up from the old 24-bit depths in previous HDMI inputs - displays billions instead of millions of colours
- Eliminates on-screen colour banding, for smooth tonal transitions and subtle gradations between colours
- Increased contrast ratio – offering improved light and shade detail
- Enables better greyscale performance





Optoma guarantees colour quality will remain as new for 10 years*

For Home Cinema colour accuracy is critical. We are so confident that, unlike competing technologies, the HD65 colour will not change in use that we have guaranteed it will stay the same as the day you bought it, for at least 10 years.

The HD65 projector based on an all-digital DLP® chip delivers stunning picture quality again and again. Unlike competing analogue technologies, the semiconductor that makes DLP® projection possible is virtually immune to environmental factors that can cause an image to degrade over time.

Run continuously for 4,000 hours in an independent laboratory test, projection systems using DLP® technology maintained their picture quality throughout. By contrast, in the same test ±, data projectors using LCD technology exhibited considerable picture degradation by 2558 hours on average.



* Conducted by the Rochester Institute of Technology's Munsell Color Science Laboratory and sponsored by Texas Instruments. The test included a sample of commercially available data projectors, five featuring LCD technology and two featuring DLP® technology. The projectors varied in features such as panel size, weight, resolution and brightness. All units were run in a continuous operation mode at an ambient room temperature of approximately 25°C.

± Optoma guarantee that in normal use, Optoma DLP® colour quality will be indistinguishable from when new. Please note that worn lamps will give slight variance. Exclusion: (1) Guarantee is voided if the projector is subject to damage through mis-use. (2) Guarantee may be void in industrial or commercial entertainment environments where dust or smoke is particularly excessive. (3) Guarantee will not apply if lamp brightness is below 50% due to wear or if the projector is not working due to other fault.

ImageAI™

HIGH LUMENS ALONE

Increases clarity in higher areas...



But makes dark areas wash out

ONLY ImageAI™ GIVES YOU BOTH!

HIGH 1600 LUMENS

for amazing clarity in light image areas...



PLUS

HIGH 4000:1 CONTRAST

for details in dark areas and shadows



ImageAI™ "Image Artificial Intelligence", Optoma's auto adjusting light intensity output delivers both high brightness and stunning contrast

HIGH CONTRAST ALONE

Increases details in darker areas...

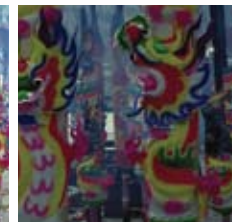


But makes lighter

Image and color enhancement technologies

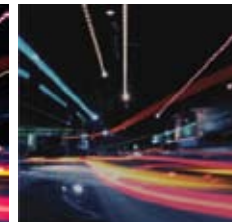
WITH

WITHOUT



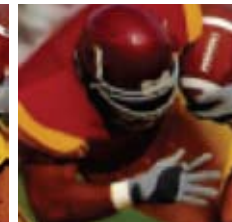
Optoma Colour Enhancement Technology™

Advanced colour processing for bright, vibrant, deep saturated colour for lifelike reproduction.



TrueVivid™ Image Processing

TrueVivid™ processing enhances image quality by increasing the depth of field for natural realistic looking images



TrueVision™ Technology

TrueVision™ deinterlacing technology eliminates jagged edges enabling the projector to deliver stunning cinema like images with exceptional picture quality

Technical Specifications

Highlights

HD Ready	Native 720P, HDMI V1.3 input
Brightness	1600 Video Optimised Lumens
Contrast	4000:1 with Image AI enabled
Audible Noise	29dB Standard mode
Display Technology	DLP DarkChip2™ 720P (1280 x 720)

Connections

Signal Type

Options	Input Connector
HDMI	1 HDMI (V1.3 10 bit)
Component	2 1.3 x RCA 2. VGA via adaptor
SCART RGB	1 VGA via supplied adaptor
S-Video (Y/C)	1 3 Pin Mini DIN
Composite Video (CVBS)	1 RCA
DVI-D Computer	1 HDMI (via adaptor)
RGB Computer	1 VGA
Screen trigger	1
Video Compatibility	PAL, SECAM (576i/p), NTSC (480i/p), HD1080P60\50\24, 1080i, 720p)

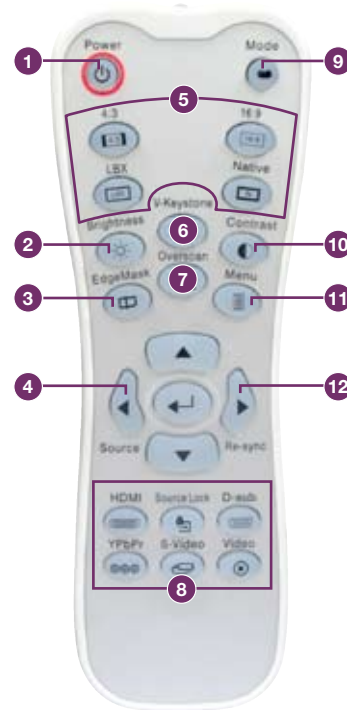
Display

Aspect Ratio	16:9 with support for 4:3
Throw Ratio	1.55-1.7 (Projection Distance/Image Width) 1.1x Manual zoom
Projection Distance	1.2m – 12m
Image Size	1.0 to 7.36m (16:9 Diagonal)
Keystone Correction	Vertical
Projection Types	Front, Ceiling, Rear, Rear ceiling
Lamp Type	180w
Lamp Life	Standard mode 3000 hours*

General

Dimensions	259x73x188mm
Weight	2.04kg
Power Consumption	265W Max, <9W standby
Operating Temperature	5-35°C Max, 80% Humidity
Mounting	Ceiling mount points and screw mount for camera style tripod
Warranty	Warranty may vary by country. Please see www.optomaeurope.com or ask your local supplier for details
Lamp Warranty	6 months or 1000 hours whichever is the sooner
Menu Languages	English, German, French, Italian, Spanish, Portuguese, Polish, Dutch, Russian, Finnish, Swedish, Greek, Norwegian/Danish, Hungarian, Czech & Arabic
Supplied accessories	AC power cord, Component video cable, S-video cable, SCART RGB to VGA 15 Pin D-Sub adaptor, VGA cable, Remote control with backlight, Batteries for Remote control, Lens cap, Users guide
Optional accessories	Ceiling Mount Kit
EAN Number	5060059042418

*Typical lamp life achieved through testing. Will vary according to operational use and environmental conditions



HD65 Remote Control

- 1 Power ON/OFF
- 2 Brightness
- 3 Edge Masking Tool
- 4 Auto source select
- 5 Display aspect ratio selection
- 6 Keystone
- 7 Overscan Control
- 8 Input selection
- 9 Preset image modes selection
- 10 Contrast
- 11 Menu
- 12 Re-sync

HD65 Projector I/O Ports

- 13 S-Video
- 14 SCART RGB VGA Component
- 15 Component
- 16 Video
- 17 HDMI V1.3
- 18 Service Port
- 19 12v Screen Trigger



Optoma

Optoma Europe Limited
42 Caxton Way,
Watford Business Park,
Watford, Hertfordshire.
WD18 8QZ

Tel: +44 (0) 1923 691800
Fax: +44 (0) 1923 691888

www.themescene.tv

Image AI

truevivid™

RoHS
COMPLIANT

ThemeScene™ is a registered trademark of Optoma Europe Ltd. TrueVivid™ and Image AI™ are registered trademarks of Optoma Technology, Inc. TrueVision™ is a trademark of Texas Instruments. DLP® and the DLP logo are registered trademarks of Texas Instruments.

All other product names and company names used herein are for identifications purposes only and may be trademarks or registered trademarks of their respective owners. Errors and omissions excepted, all specifications are subject to change without notice.

PICTURE BY
DLP
TEXAS INSTRUMENTS